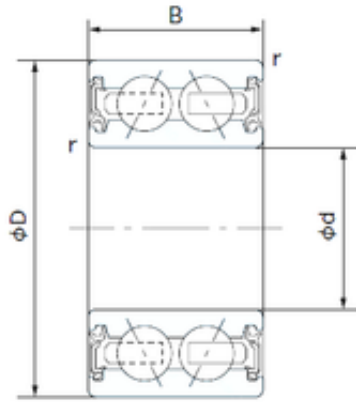




# FAG BEARING LIMITED

## 35 mm x 50 mm x 20 mm NACHI 35BG05S7G-2DL angular contact ball bearings



Bearing No. 35BG05S7G-2DL

35BG05S7G-2DL Bearing 2D drawings and 3D CAD models

Size	35x50x20 mm
Bore Diameter	35 mm
Outer Diameter	50 mm
Width	20 mm
d	35 mm
D	50 mm
B	20 mm
C	20 mm
r min.	0.3 mm
Basic dynamic load rating (C)	11,1 kN
Category	Angular Contact Ball Bearings
Inventory	0.0
Manufacturer Name	NACHI
Minimum Buy Quantity	N/A
Weight / Kilogram	0
Product Group	B00152
Enclosure	2 Seals
Flush Ground	No
Rolling Element	Ball Bearing
Number of Rows of Balls	Double Row
Precision Class	ABEC 1   ISO P0
Maximum Capacity / Filling Slot	No
Snap Ring	No



## FAG BEARING LIMITED

Internal Clearance	C0-Medium
Number of Bearings	1 (Single)
Inch - Metric	Metric
Long Description	35MM Bore; 50MM Outside Diameter; 20MM Width; 2 Seals; No Flush Ground; Ball Bearing; Double Row of Balls; ABEC 1   ISO P0; No Filling Slot; No Snap Ring; C0-Medium; 1 (Single)
Category	Angular Contact Ball Bearing
UNSPSC	31171531
Harmonized Tariff Code	8482.10.50.28
Noun	Bearing
Keyword String	Angular Contact
Manufacturer URL	<a href="http://www.nachi.com">http://www.nachi.com</a>
Width	0.787 Inch   20 Millimeter
Bore	1.378 Inch   35 Millimeter
Outside Diameter	1.969 Inch   50 Millimeter